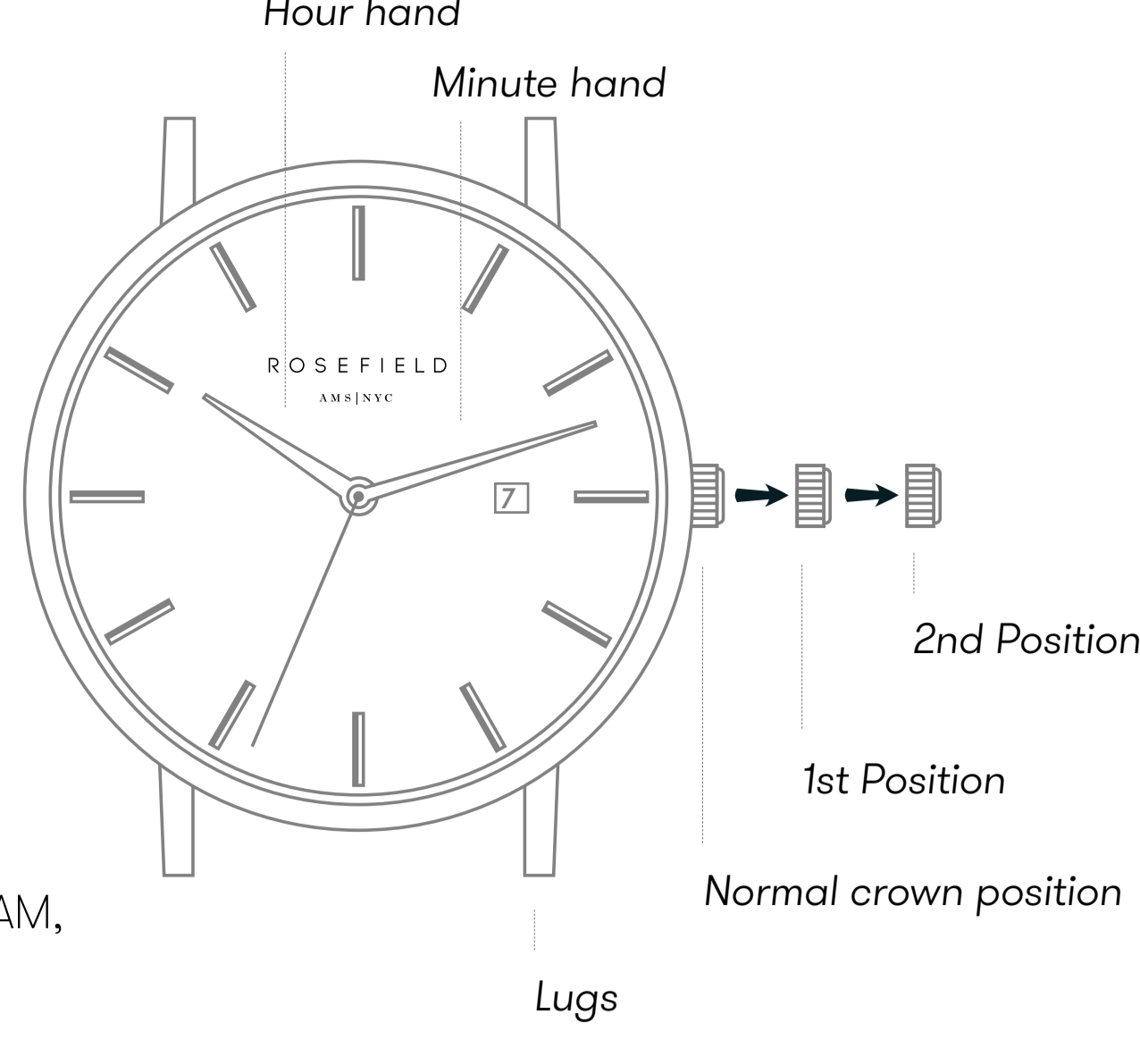


# Instructions

## SETTING THE TIME

1. Remove the plastic stopper to start the watch.
2. Pull the crown out to the second position.
3. Turn the crown to set the time.
4. Push the crown back to the normal position.



## SETTING THE DATE

1. Pull the crown out to the first position.
2. Turn the crown counter-clockwise to set the date.
3. Push the crown back to the normal position.

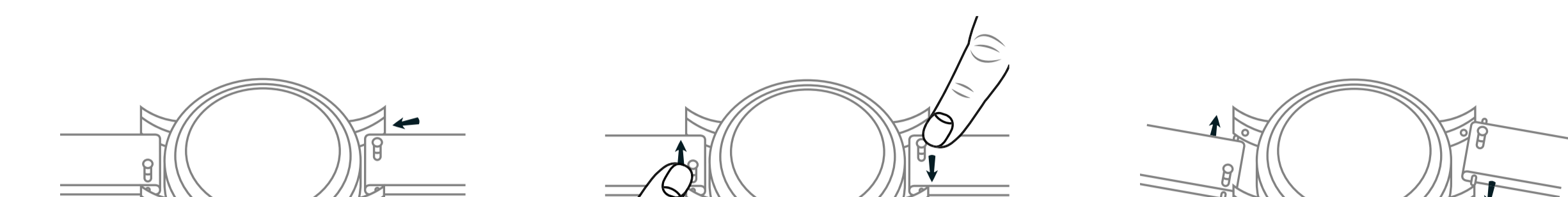
\* If the date is set between the hours of 9:00 PM and 1:00 AM, the date may not change the following day.

## CLOSING THE CLASP OF YOUR MESH STRAP



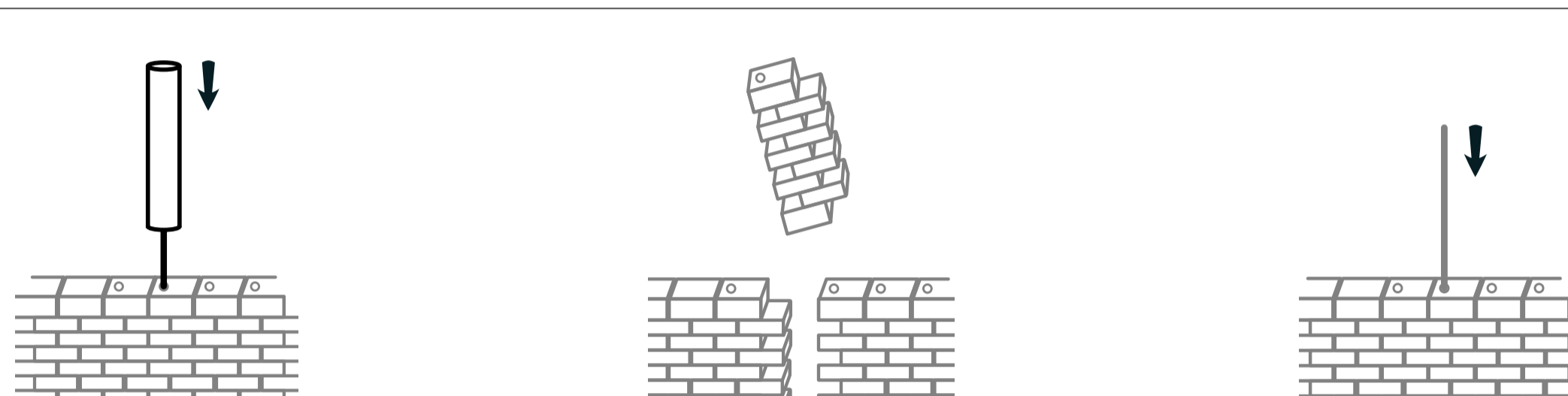
1. Hook the top part of the clasp onto the thin metal bar.
2. Snap the closure on.

## CHANGING YOUR STRAP



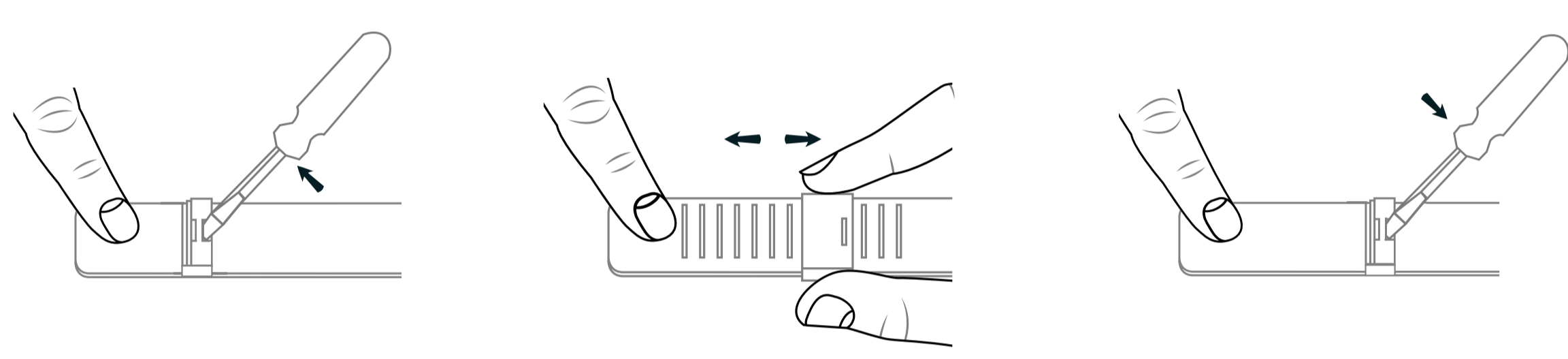
1. Securely hold the watch and locate the pin mechanism on the bottom side of the strap.
2. Slide the pin to the opposite side to release the strap from the lugs.
3. To attach a new strap, start with the pin located on the opposite side of the slide mechanism. Place the pin in the lug, while slightly tilting the strap forward. Slide the pin mechanism and place the other pin between the lugs.

## ADJUSTING THE SIZE OF YOUR STEEL STRAP



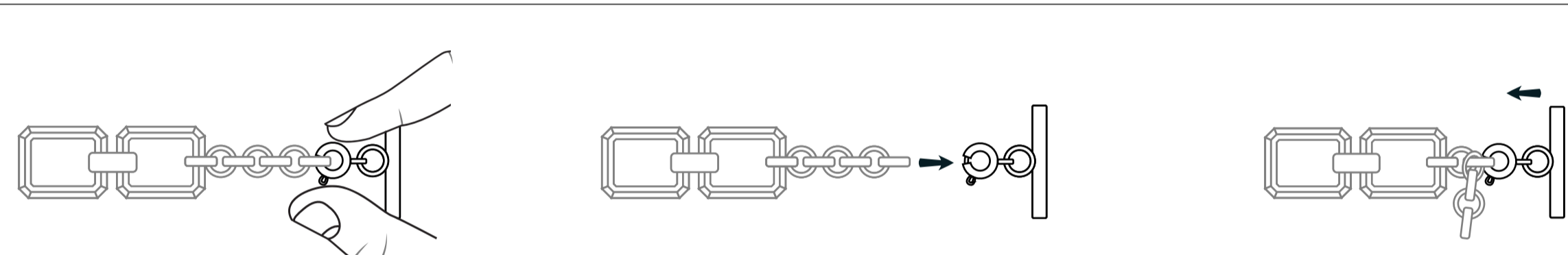
1. Insert the strap tool (supplied with every steel strap) into the hole on the side of the strap and push the pin out in the direction of the arrow. Using a small household hammer, tap lightly until the pin comes out on the other side. Grasp the pin and pull out.
2. Remove or add required strap links. If removing more than one strap link, remove an equal number of links from both sides to keep the strap even and symmetrical.
3. After removing or adding the necessary number of strap links, place the pins back in the opposite direction of the arrows, the pin's grooved top faced down. To finish, tap the pins back through using the hammer.

## ADJUSTING THE SIZE OF YOUR MESH STRAP



1. Insert a metal tool into the slot and lift up the plate clamp.
2. On the back side, slide the locking clasp to the desired position to adjust the length of the strap.
3. Press the plate clamp back down (firmly) to lock the clasp to the mesh strap.

## ADJUSTING THE SIZE OF YOUR CHAIN BRACELET



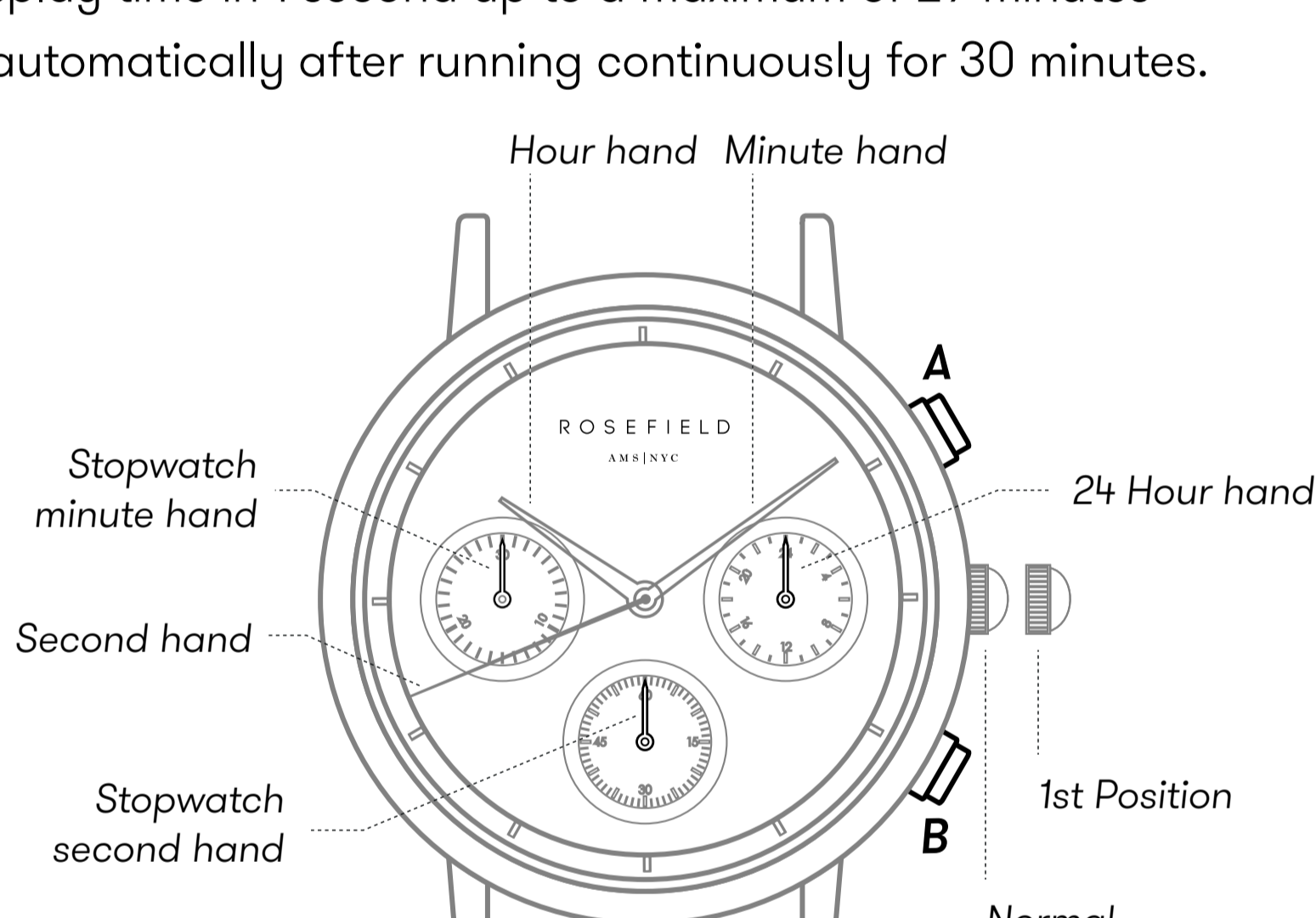
1. Open the spring lock, and release the T-bar from the chain tail.
2. Separate the T-bar from the chain tail.
3. Attach the T-bar with spring lock to the chain tail in the correct size for your wrist.

## USING THE STOPWATCH

This stopwatch is able to measure and display time in 1 second up to a maximum of 29 minutes and 59 seconds. The stopwatch will stop automatically after running continuously for 30 minutes.

1. Press button "A" to start the stopwatch.
2. The stopwatch can be started and stopped by pressing button "A".
3. Pressing button "B" resets the stopwatch and the stopwatch minute and second hands return to their ZERO positions.

\* Button A / B does not function during resetting the stopwatch.



## STOPWATCH RESET

This procedure should be performed when the stopwatch second hand does not return to the ZERO position after the stopwatch has been reset, and after the battery has been replaced.

1. Pull the crown out to the 1st Position.
2. Press button "A" to set the second hand of the stopwatch to the ZERO position.
  - \* The stopwatch minute hand is synchronized with the second hand of the stopwatch.
  - \* The second hand of the stopwatch can be advanced rapidly by continuously pressing button "A".
3. Once the hands have been zeroed, the time is reset and you can return the crown to its normal position.

# Warranty & Aftersales

## RETURNS & REFUNDS

Any purchase made through our website [rosefieldwatches.com](http://rosefieldwatches.com) can be returned within 60 days from arrival without reason. Personalized items are exempt of this policy, unless the product is defective. The product must be returned in its original packaging with all tags or additional pieces (if any). The product must be returned in the same condition as when it was received to qualify for a refund. Please note: Removal of any protective stickers on the dial or clasp voids any exchanges or refunds during this period unless the product is defective under our warranty conditions.

You can find our full Terms & Conditions at the Support section: [Terms & Conditions](#)

You can find more information about our return policy in the "Returns & Refunds" category of our FAQ, under the ["What is your return policy and how do I return my order?"](#)

## INTERNATIONAL WARRANTY

Your Rosefield product is guaranteed free from manufacturing defects for a period of 24 months from the date of purchase. This guarantees the buyer that the product meets the standards of usability, reliability, and durability. Please contact us [support@rosefieldwatches.com](mailto:support@rosefieldwatches.com) for more information or to start a warranty claim.

The warranty does not apply to:

- Damages as a result of inattention or improper usage such as scratching, bouncing or falling.
- Failure or damage caused by unjustifiable repair or modification performed by a third party, without prior written permission by ROSEFIELD.
- Failure or damage caused by fire or water (the watches are 3 ATM water-resistant).
- Visible wear traces on the watch (e.g. minor scratches on the case and/or crystal, alteration of the color on the watchband and scratches or softening of the leather strap).
- Battery replacement, also not during the warranty term.